



www.bornagodaz.com  
info@bornagodaz.com

Tel: 02156233929-30  
Fax: 02156230236

Head Office: No. 2 , Golbarg 2 , Narenjestan Blvd , Shamsabad Industrial City , Qom Old Road , Tehran , Iran

TITLE:

**SACRIFICIAL MAGNESIUM ANODE- 500 g**  
(Standard)

DWG CODE:

**BAME1A100B100H00G500-S**

DOC NO.:

**4-DR-20**

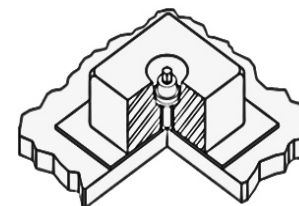
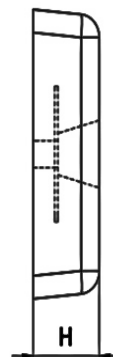
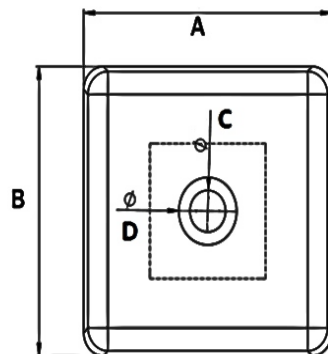
**Approved by BORNA GODAZ Co.**

Name & Signature:

**Client's Approval**

Name & Signature:

	NAME	DATE
Design & Draw:	H.SOHRABI	2016-10-10
Checked:	A.AKHLAGHI	2016-10-10
Approved:	M.NASRI	2016-10-10
SCALE:	A4	SHEET 1 OF 1



**Specifications & Properties**

Anode Dimension (mm)	A=100 ; B=100 ; H=30
Hole Dimension (mm)	C=22 ; D=35
Gross Wt. (Kg) (Approx.)	0.5
<input type="checkbox"/> Cable (mm)	-----
<input type="checkbox"/> Back Fill (%)	-----

**NOTE:**  
- All data specifications are prepared according to relevant standards and regulations.

**Electrochemical Properties of Magnesium Anodes**

Acc. To BS-7361

Electrochemical Capacity (Ah/kg)	1200
Open Circuit Potential (V) (Respect to CU/CUSO4 Reference Electrode)	-1.5
Efficiency (%)	58

**Chemical Composition of Magnesium Anodes**

Acc. To ASTM-B-843

Aluminum	5.3-6.7%
Zinc	2.5-3.5%
Manganese	0.15-0.7%
Silicon	0.1% max
Copper	0.02% max
Nickel	0.003% max
Iron	0.003% max
Total Others	0.3% max
Magnesium	Remainder